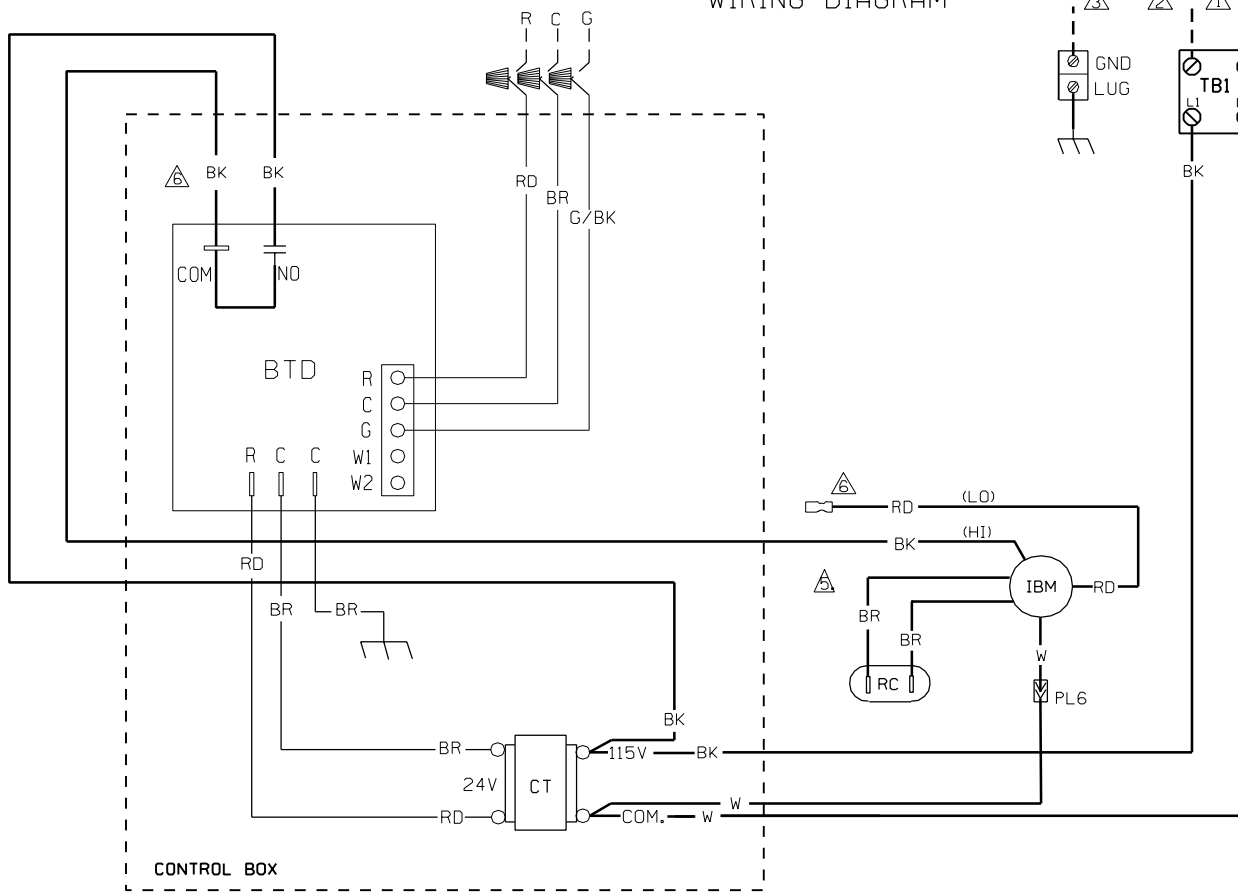
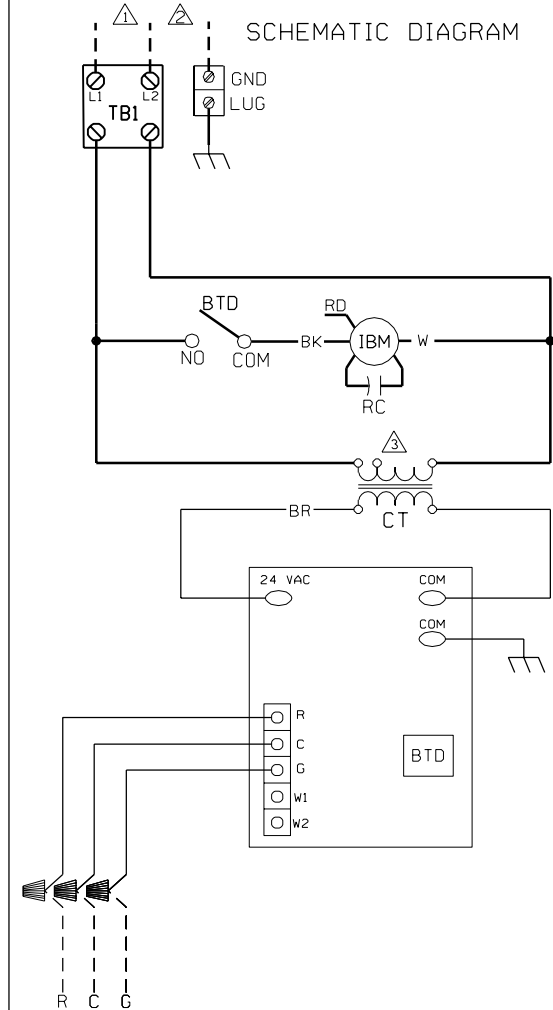


WIRING DIAGRAM



SCHEMATIC DIAGRAM



NOTES:

- ⚠️ CONNECT SUPPLY WIRING TO 115V, 60HZ, SINGLE PHASE.
- ⚠️ SUPPLY WIRE MUST BE RATED AT 75° C MIN. SEE INSTRUCTIONS FOR SIZE.
- ⚠️ FOR USE WITH COPPER CONDUCTORS ONLY.
- ⚠️ CONTROL WIRING TO THERMOSTAT.
- ⚠️ THE WIRING DIAGRAM ABOVE SHOWS THE HIGH CONNECTION.
- ⚠️ FOR LOW SPEED BLOWER:
 - REMOVE (BK) WIRE FROM COM TERMINAL OF BTD.
 - MOVE INSULATED CAP FROM (RD) WIRE TO (BK) WIRE.
 - ATTACH (RD) WIRE TO BTD RELAY COM TERMINAL.

COMPONENT CODE

- BLWR TIME DELAY
- CB CIRCUIT BREAKER
- CT CONTROL TRANSFORMER
- IBM INDOOR BLOWER MOTOR
- OPT OPTIONAL
- PL POLARIZED PLUG
- RC RUN CAPACITOR

WIRING INFORMATION

- LINE VOLTAGE
 - FACTORY STANDARD
 - FACTORY OPTION
 - FIELD INSTALLED
- LOW VOLTAGE
 - FACTORY STANDARD
 - FACTORY OPTION
 - FIELD INSTALLED
- REPLACEMENT WIRE
 - MUST BE THE SAME SIZE AND TYPE OF
 - INSULATION AS ORIGINAL (105° C MIN.)
- WARNING
 - CABINET MUST BE PERMANENTLY GROUNDED AND CONFORM TO N.E.C., (C.E.C.-CANADA) AND LOCAL CODES.

WIRE COLOR CODE

- | | |
|------------|------------|
| BK__BLACK | PR__PURPLE |
| BR__BROWN | RD__RED |
| BL__BLUE | WH__WHITE |
| GR__GREEN | YL__YELLOW |
| OR__ORANGE | |

WIRING DIAGRAM ELECTRIC AIR HANDLER PSC MOTOR 115 VOLT